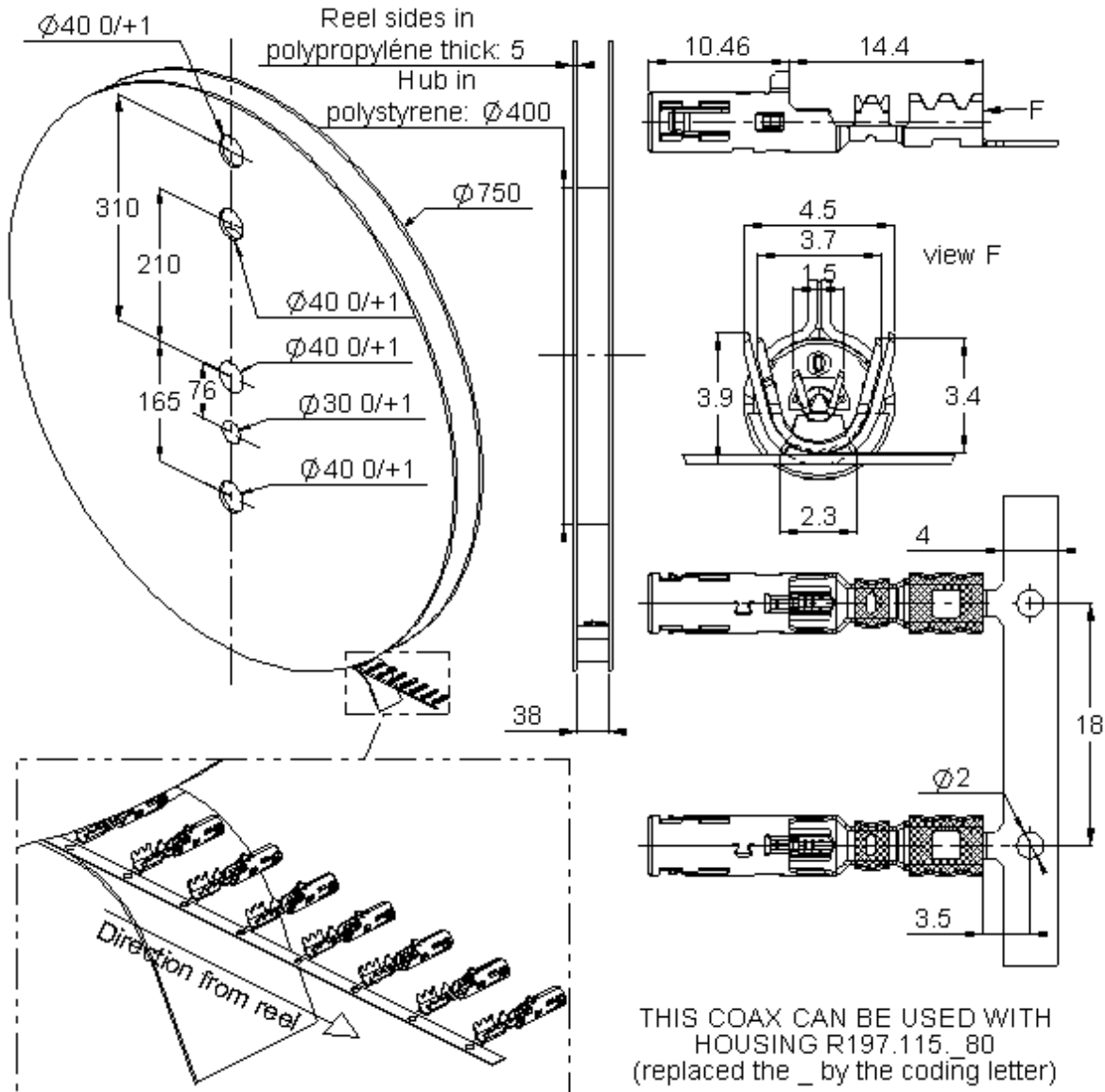


**R3C FEMALE COAX CAB 2.6/50**

**PACKAGING REEL 2600**

**R299.197.200**



All dimensions are in mm.

COMPONENTS	MATERIALS	PLATING (µm)	
BODY	BRONZE	TIN 3 OVER NICKEL 2	
CENTER CONTACT	BRONZE	SELECTIVE GOLD+ SELECTIVE TIN	
OUTER CONTACT	-	UL CLASSIFICATION	COLOR
INSULATOR	POLYMER	UL94-V0	NATURAL
	-		

**Standard Packaging : 2600+/-2%\***

\* Nota : possibility of having a maximum of five missing parts consecutively on the tape

Issue : 0935 B

In the effort to improve our products, we reserve the right to make changes judged to be necessary.

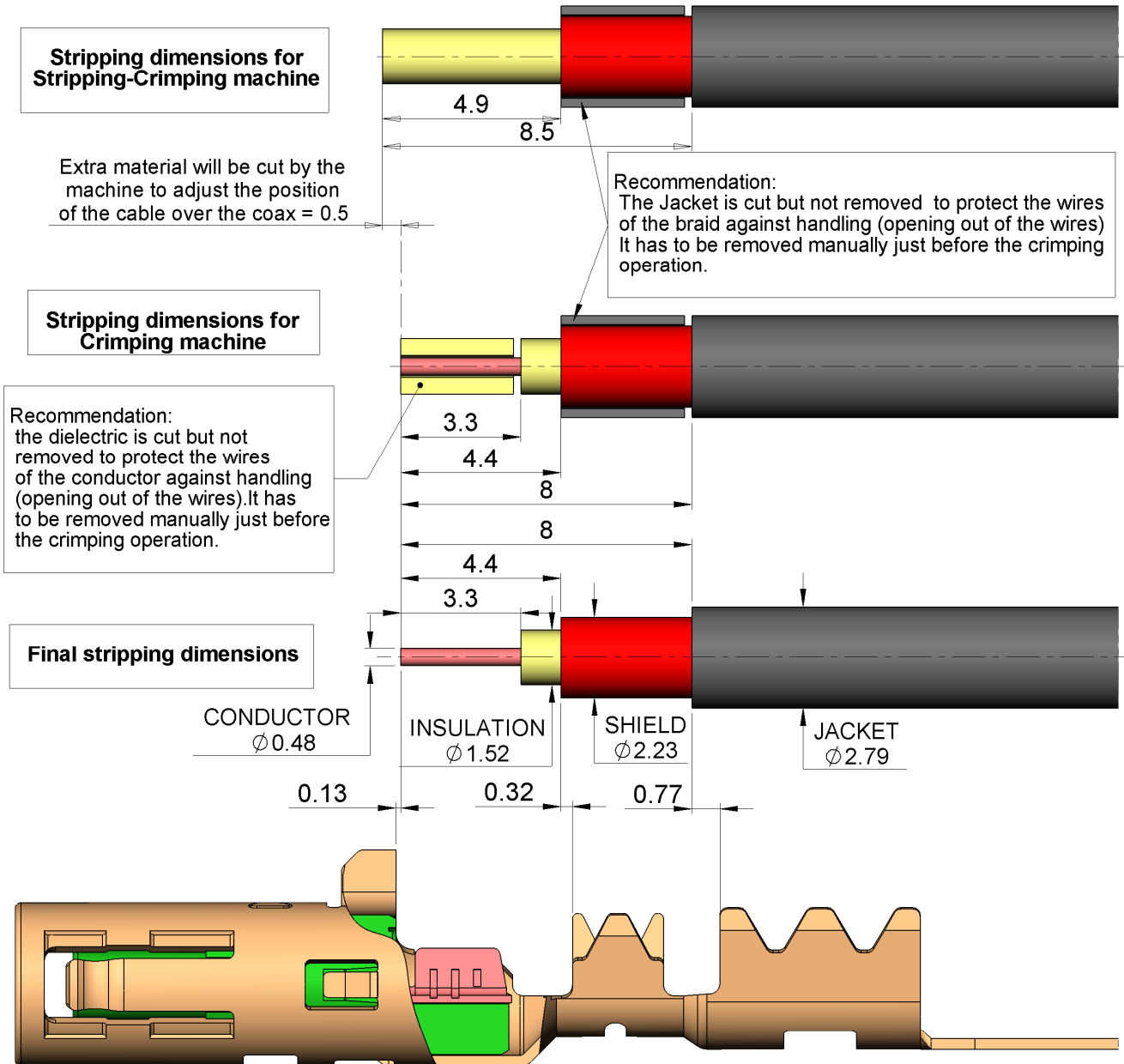


**R3C FEMALE COAX CAB 2.6/50**

**PACKAGING REEL 2600**

**R299.197.200**

**Recommended Stripping dimensions of the RG174 cable  
for R3C female R299.197.200**



Recommendation:  
The Jacket is cut but not removed to protect the wires of the braid against handling (opening out of the wires) It has to be removed manually just before the crimping operation.

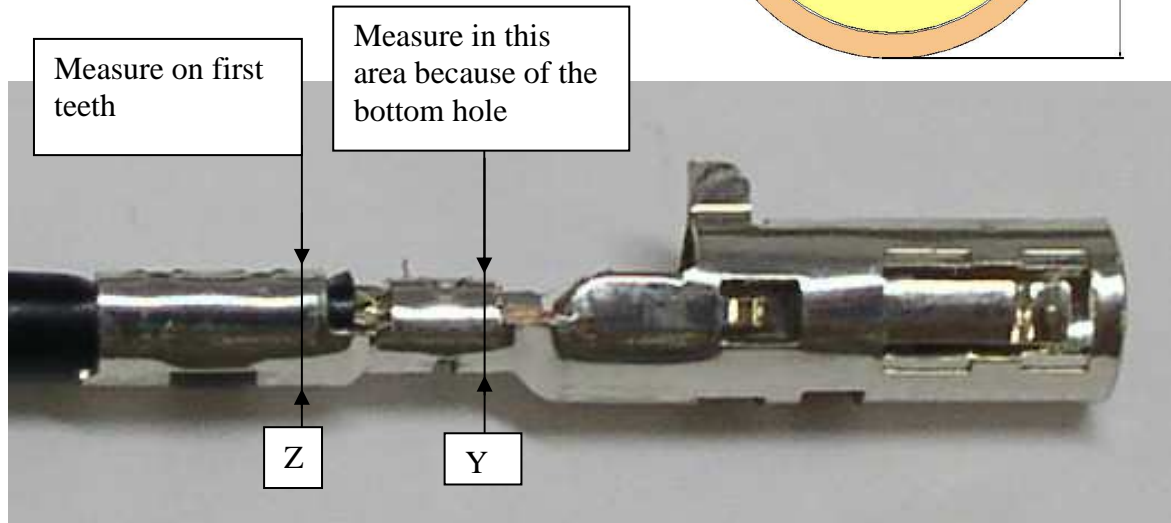
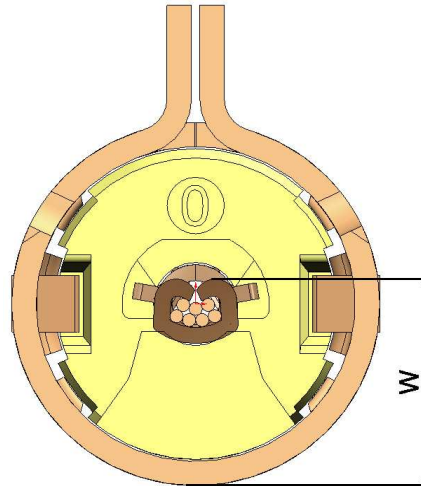
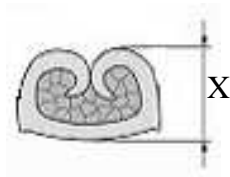
Recommendation:  
the dielectric is cut but not removed to protect the wires of the conductor against handling (opening out of the wires). It has to be removed manually just before the crimping operation.

**R3C FEMALE COAX CAB 2.6/50**

**PACKAGING REEL 2600**

**R299.197.200**

crimping height **			
conductor X	braid Y	jacket Z	conductor/body W
0,78±0,05	2,32±0,05	2,8+0,1/-0,03	2,32±0,05



**\*\* CAUTION**

-Before using applicator, make sure the press is calibrated :135,8 mm from the lower dead point up to the base

-Crimping height may change depending on the manufacturer of the cable, for more informations please contact us

-We recommend to make electrical test after each set up of the applicator:

Outer and center contact continuity+Dielectric withstanding voltage 800Vrms, 50Hz  
Insulation resistance 1000 Mohms

Cable retention = 110Newton mini during 5 seconds with electrical continuity

Issue : 0935 B

In the effort to improve our products, we reserve the right to make changes judged to be necessary.

